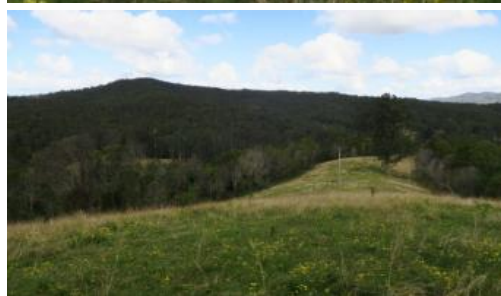


Sold



3718 Taylors Arm Rd, Burrupine



LARGE ACREAGE FARM WITH TWO TITLES

A large 160 acre parcel of land in the heart of Burrupine with frontage to both Taylors Arm River and Apple Tree Creek.

The above information provided has been furnished to us by the vendor/s. We have not verified whether or not that information is accurate and do not have any belief in one way or the other in its accuracy. We do not accept any responsibility to any person for its accuracy and do no more than pass it on. All interested parties should make and rely upon their own inquiries in order to determine whether or not this information is in fact accurate.

 2  1

Price	SOLD
Property Type	residential
Property ID	208
Land Area	65.15 ha

Agent Details

Jesse Stanton - 0432 187 075
Geoff Searle - 0429 456 689

Office Details

Macksville
10 Wallace Street Macksville NSW
2447 Australia
02 6568 1666

G J KENNEDY & CO PTY LTD